

University Introduction and Admission Guidance 2021

Graduate School of Health Sciences
Center for International Relations
Updated on November 18, 2020



FUJITA HEALTH UNIVERSITY

藤田医科大学

Copyright (C) FUJITA ACADEMY ALL RIGHTS RESERVED

Contents

1. University Overview
2. Introduction of Graduate School of Health Sciences
3. Admission Guide
4. Living in Japan



1. University Overview

Graduate School of Health Sciences
Center for International Relations



FUJITA HEALTH UNIVERSITY

藤田医科大学

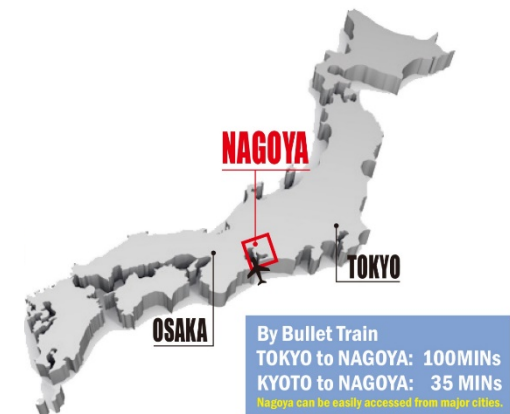
Copyright (C) FUJITA ACADEMY ALL RIGHTS RESERVED

University Overview



Basic Information

- ✓ 1968 Established
- ✓ Located in Toyoake, Aichi, Japan
- ✓ 3,082 students as of 2020
- ✓ Possesses 4 teaching hospitals with 1 research institution.



University Overview

Schools and Faculties	
School of Medicine	Faculty of Medicine
School of Medical Sciences	Faculty of Radiological Technology Faculty of Medical Technology
School of Health Sciences	Faculty of Nursing Faculty of Rehabilitation
Graduate Schools	Medicine / Health Sciences

Autumn Admission for International Students Starts from 2021

Autumn Admission of Master's course and Doctoral course in Graduate School of Health Sciences will be open from October, 2021
(Application starts from February, 2021)

THE Asia Universities Summit 2021

Nominated as the first venue in Japan

Date : July 1st – 3rd , 2021

Speakers: Nobel prize winners, International leaders, a Member of the Imperial Family, University Presidents from Asia and so on....

THE WORLD UNIVERSITY RANKINGS

Japanese universities **8th**

World university Rankings **TOP.401-500**

Ranked of top 2.5% universities worldwide



Features in Clinical Field

The University Hospitals receive a large number of patients and have various medical fields with high medical quality

Number of Patients

- ✓ **The Largest Number of Hospital Beds in Japan, 1,435 Beds**
- ✓ **The Average Daily Inpatients 1,297 and Outpatient 3,261 (FY 2018)**
- ✓ **Number of operations about 13,200 cases (FY 2018)**

Medical Fields

- ✓ **40 Diverse Departments**
- ✓ **Wide Range of Treatment** - From Cutting-edge to End-of-life Care
- ✓ **Registration as Designated Hospital by Japanese Government**
The Center Hospital for Disaster /Designated Cancer Core Hospital
AIDS Prevention and Treatment Base /Liver Disease Treatment Cooperation Base etc..



Organization Accredited
by Joint Commission International

JOINT COMMISSION INTERNATIONAL APPROVED

The hospital was evaluated of its world top level Medical Quality and Patients Safety. (Confirmed in top score 99.8% in 2018)



Features in Clinical Field

Developing and Introducing World Cutting Edge Technology



World's first Installment of the new CANON CT*

Joint Development with
CANON Medical Systems
Corporation

*TOSHIBATSX8100G+AquilionONE (320
slices ADCT installed IVR-CT)



Cutting Edge Rehabilitation Robotics

Joint development
with TOYOTA MOTOR
Corporation



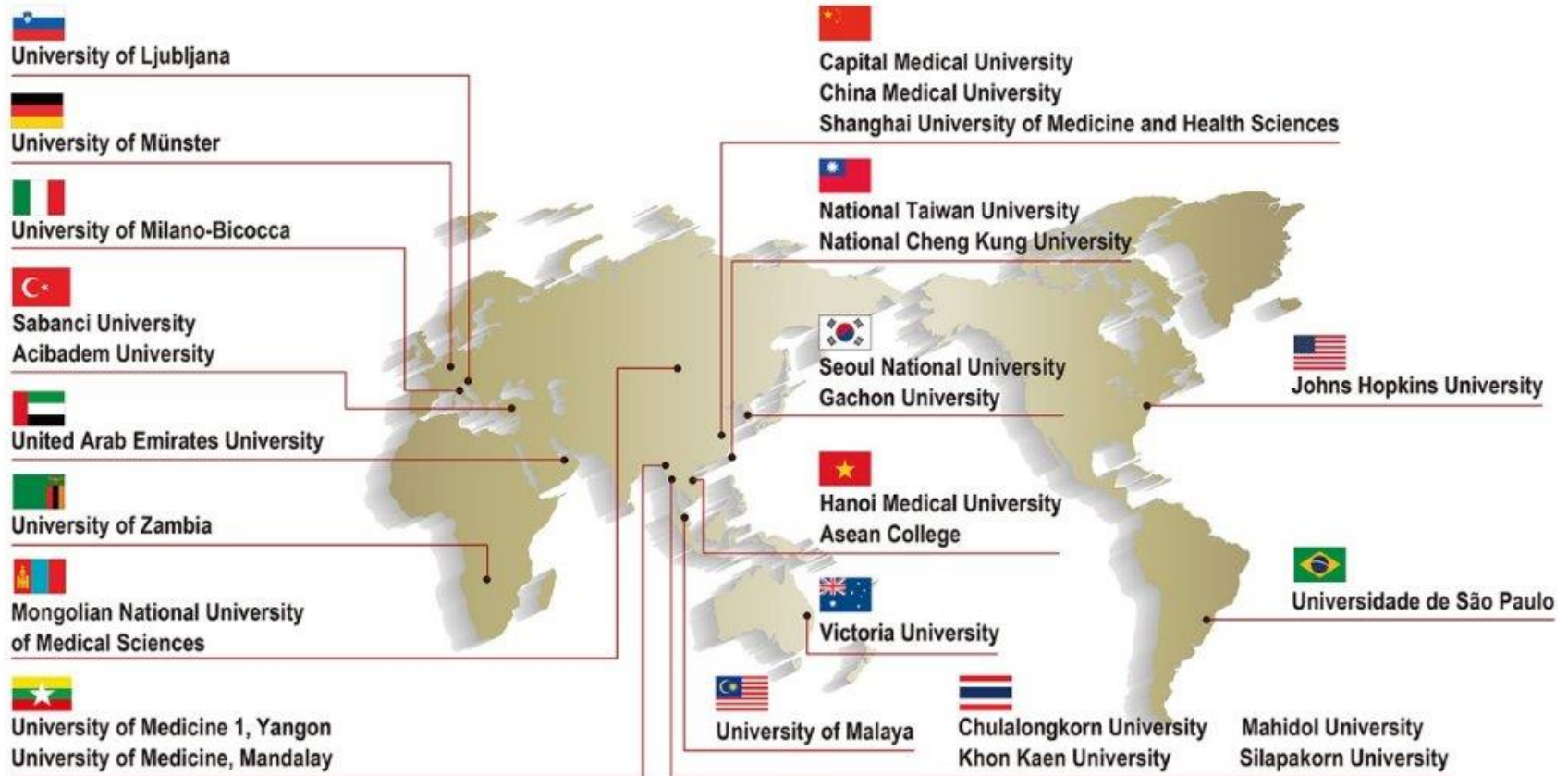
Robot Surgery Da-Vinci

Running one of the only
two Superior Training
Center (Epi-Center) for
Da-Vinci Robot in Asia



Global Partners

MOU has been established with 27 schools in 17 countries



2. Introduction of Graduate School of Health Sciences



Graduate School of Health Sciences

Graduate School consist of 6departments in Master's Course and 4 departments in Doctoral Course.

DEPARTMENTS LIST

Master's Course

Clinical Laboratory Medicine

Nursing

Medical Radiation Sciences

Rehabilitation

Clinical Engineering

Medical Management and Information Science

Doctoral Course

Medical Technology Sciences

Radiation Sciences

Rehabilitation Sciences

Medical and Health Care Sciences



Master's: Clinical Laboratory Medicine

Department	Course Aim
Morphology and Cell Function	Clarify the research theme and create a master's thesis by applying various techniques learned in the exercises. Also, research and develop useful morphological methods used in hospital laboratories. In addition, we discuss the problems of cytopathological diagnosis of cancer.
Clinical Physiology and Functional Imaging	The purpose of this course is to conduct research related clinical physiology and functional imaging, especially, ultrasound image. In order to obtain information necessary for diagnosis and treatment of diseases, the theory and technology supported by evidence-based medicine are used to scientifically analyze the association with the pathologic state from the ultrasound image analysis and clinical laboratory data. Students will learn the research methodology via writing a master's thesis.
Biomedical and Analytical Science	The aim of this class is to write a graduation thesis. This course deal with clear the pathobiological mechanism of diseases.
Disease Control and Prevention	The purpose of this course is to conduct research related to the development of novel medical science and technology. This course will be taught by the instructors associated with this field such as preemptive medicine, personalized medicine, disease onset prediction, drug effect/side effect/prognosis prediction, companion diagnosis, disease state information analysis, Personal Health Record, and cohort analysis.
Molecular Laboratory Medicine	Department of molecular laboratory medicine consists of hematology, immunology and molecular biology laboratories. Therefore, students will conduct actual research projects in enrolled laboratory as thesis studies.



Master's: Clinical Laboratory Medicine

Department	Course Aim
Preventive Medical Sciences	This course deals with analysis of population-based epidemiological data. Students will conduct research that contributes to elucidating the mechanisms of lifestyle-related diseases and establishing preventive measures for the diseases. They learn the research methodology via writing a master's thesis.
Laboratory Animal Science	Based on the knowledge and skills gained from the "Graduate Seminar of Science for Animal Models ", students develop the ability to formulate research that elucidate the pathogenesis of human diseases and treat them.
Genetic Counseling	Create a master's thesis by researching specific themes related to genetic counseling, and reviewing the literature or gaining deep insight into the problems associated with the cases in which you were present. Through master's research, cultivate the qualifications involved in a certified genetic counselor with thinking and insight.
Regulatory Science	The students clarify research topic for pathophysiology of psychiatric and neurological disorders such as depression, schizophrenia, multiple sclerosis and Alzheimer's disease and performs the basic research using animal models and neuron and glia cells to develop diagnostic drugs, pharmaceuticals, and functional foods for these disorders.
Regenerative Medicine, Cell and Gene Therapy	Although knowledge about the effectiveness of cell and gene therapy products is often considered, but the development of new methods such as quality control is still under development. Acquire specialized knowledge by conducting research activities to develop new quality control methods, and promote a series of research activities such as setting research subjects, drafting research plans, performing experiments, surveys, analyzes, and writing dissertations.



Master's: Clinical Laboratory Medicine

Department	Course Aim
Assisted Reproductive Medicine	<p>A clinical training is performed for 1 year at clinical practice registration facilities of in-vitro fertilization and embryo transfer of a Japan Society of Obstetrics and Gynecology. (Mainly, Fujita University hospital and Tawara IVF clinic, Bell clinic and etc.).</p> <p>As work experiences, the human gamete, the fertilized egg and the embryo handling, facility management, such as creation of the medium, preparation of the instrument, and the maintenance of egg collection room, etc. When carrying out, We guide the mastery of the basic technology about handling of the gamete, the fertilized egg, and the germ.</p> <p>Furthermore, we give the description about the latest topics. We also teach so that the high sense of ethics and dignity may be supported to the assisted reproductive technology in the process in which we experience the job of the actual embryo cultivator.</p>



Master's: Medical Radiation Sciences

Department	Course Aim
Neuroimaging and Brain Science	This course aims the development of imaging technologies for the central nervous system of humans and experimental animals, research of the image analysis using various medical images, the functional image analysis using artificial intelligence, etc.
Medical imaging and information sciences	This course deals with the medical image analysis, artificial intelligence in medicine, and CT imaging and its evaluation technique. Students develop the novel techniques to improve the accuracy of image diagnosis. They will also learn the research methodology via writing a master's thesis.
Radiation Safety Management	In this broad field, from the viewpoint of the relationship between humans and radiation, we select issues related to the effects of radiation on the human body and the protection of radiation, and clarify the research, background, and significance of pioneers. The aim of the research is to develop new methods or gain knowledge, and to acquire the ideal way of research through the preparation of master's thesis.
Medical Physics	This course features radiation dosimetry and therapeutic technology and physics. The lectures and practices in this course include essences of physics, engineering, radiation dosimetry, radiation oncology and radiotherapy techniques as educational program of medical physicists accredited by Japan board of medical physicists. Students who chose this department learn about novel topics in medical physics field, program language for computation and presentation skills through several subject of lectures, practices and hospital training. Students finally creates a paper of master's thesis.



Master's: Clinical Engineering

Department	Course Aim
Biomaterial structure function science	Analyze living organisms from the molecular level and ascertain life phenomena by associating structures with functions. In addition, cultivate qualifications for conducting research and create master's theses.
Clinical Engineering	In this course, by conducting the research to develop practical information systems for clinical settings, students will gain the ability to develop advanced clinical systems, also, develop logical thinking and problem-solving skills through the process of system development, as well as expressive and persuasive skills through the process of writing and presenting master's theses.
Fundamental and therapeutic aspects of artificial organs	The students perform special research projects to contribute to medical care and treatment based on the knowledge, theories and skills which are acquired through the seminars and exercises of this field. They are required to create their master's thesis based on their research result. We expect students to develop their abilities to proceed the medical care, education and research with deep thinking and insights through this course.



Master's: Nursing

Department	Course Aim
Nursing Education	Students independently promote research on nursing education and create a master thesis. In the process, Students empower basic abilities that contribute to the development of nursing education.
Self-Care Nursing	Graduate students write a master's thesis on nursing care for adults, elderly patients, and families with chronic health problems by integrating with nursing practice. They will explore various problems related to health promotion and self-care of chronic disabilities by utilizing the theories and nursing models learned in the seminar and exercises. And they clarify their research topics related to nursing care for adults and the elderly, conduct nursing research, and prepare a master's thesis.
Acute and Perioperative Period	From the perspective of a team approach in medical care, we study the problems regarding perioperative care, emergency care, disaster medical care, highly advanced medical treatment (robot surgery, transplant medical care, minimally invasive surgery, auxiliary artificial heart treatment, etc.), medical care security, medical care economy, training, and, based on knowledge, the technique that each obtained in seminar, practice, training, and making announcements. In addition, we learn about how diagnoses (including the symptom), treatment, nursing, and other factors affect a study widely. By about late 1, we learn pharmacodynamics, the clinicopathology associated with the study, and a class associated with the clinical diagnosis. Through group work and group discussion, develop the ability to find solutions to problems.



Master's: Nursing

Department	Course Aim
Community Health Nursing	Utilize nursing assistance models and theories related to community health activities and home care to train at public health centers, health centers, occupational health fields, core community care centers and visiting nursing stations. Construct a comprehensive community care system, conduct research on community health care and welfare activities, conduct research on health behavior and support methods for individuals, families and groups, and prepare a master's thesis.
Nursing Management	The purpose of this course is to enable students to clarify research topics related to nursing management that will lead to the provision of high-quality organizational nursing services, to scientifically explore those research topics, and to prepare master's theses. This process helps students acquire the basic ability to conduct research and gain the fundamental ability to develop concepts and theories about nursing management.
Mental Health Nursing	Based on the theories and knowledge learned in special topics and exercises, the theoretical framework of one's own research in the field of mental health nursing is clarified. On top of that, the subject of the research is clarified, and the master's thesis is prepared systematically based on the selection of the research method suitable for the subject. In addition, we will actively utilize information both in Japan and overseas so that interdisciplinary perspectives can be spread through research activities.
Child Health Nursing	Based on the theories and knowledge learned in Child Health Nursing and Child Health Nursing Seminar, students will analyze and evaluate nursing practice in the field of child health care nursing for children and their families, clarify research issues related to nursing support systems, etc., and develop basic research skills to write a master's thesis.



Master's: Nursing

Department	Course Aim
Maternal Nursing	Based on the theories and knowledge learned in maternal nursing seminars and exercises, clarify research issues related to women's health support throughout their lives, and prepare master's theses while verifying the support of nursing practice.
Recipient Coordination	This course deals with clarification of research issues related to transplant coordination and paper writing from a clinically based perspective. Students will achieve basic skills and ability as a transplant coordinator to develop concepts and theories through this process and clinical training.
Donor Coordination	This course deals with clarification of research issues related to transplant coordination and paper writing from a clinically based perspective. Students will achieve basic skills and ability as a transplant coordinator to develop concepts and theories through this process and clinical training.



Master's: Rehabilitation

Department	Course Aim
Sensory-Motor System Science	<p>Select clinically-oriented research themes related to sensory-motor system science regardless of basic research or clinical research. In other words, based on kinematics, electrophysiology, prosthetics and orthotics, and rehabilitation engineering, a neurophysiological research of the conventional treatment method is performed.</p> <p>Discuss and set research themes that can contribute to the development of clinical medicine over the future.</p> <p>Students conduct research while discussing with their supervisor as needed, publish the results at academic conferences or dissertations, and prepare master's thesis.</p>
Dysphasia Therapeutics	<p>In this course, to determine the theme of thesis, current problems in dysphagia rehabilitation will be discussed based on the classes of dysphagia therapeutics and graduate seminar of dysphagia therapeutic. Theme includes a wide range of field from basic physiology (anatomy, physiology) to clinical research (exercise, outcome). Students may choose the topic according to the necessity from social and medical view and their interests. Students will read through all the related manuscript of their theme, make a research plan, implement, and then complete a thesis. Students will be encouraged to submit the related journals. They may use the publish journal as a thesis.</p>
Occupational Therapy Science	<p>In this class, we clarify a scientific side of occupational therapy using various experimental means to measure cerebral features.</p>



Master's: Rehabilitation

Department	Course Aim
Rehabilitation Functional Morphology	<p>Explain the functional analysis not to remain in form and structure observation about problems, determination of prognosis occurring in a treatment process undergoing rehabilitation in a clinic based on bones, ligament, tendon, the articular knowledge and theory that macroscopic, are histologic including muscle.</p> <p>It is macroscopic as a method of analysis and wears a histological observation method and, using immunohistochemistry, biochemical and molecular analytical technique, makes clear that it is in the form of tissue, cells of the locomotor system about a function.</p> <p>Also, we perform it in the neurologic analysis similarly.</p> <p>We clarify a research theme of each person and give an explanation that we make the substantial master's thesis that demonstrated the supposition about the tissue of various locomotor systems, many problems about cells.</p>
Rehabilitation Educational Science	<p>The students research the knowledge, skills, and attitudes necessary for educating therapists from the perspective of EBM (Evidence-Based Medicine) and pursue science.</p>

Master's: Medical Management and Information Science

Department	Course Aim
Healthcare Management	<p>The field of medical management studies has two laboratories of "medical policy, business administration" and "medical treatment information management studies".</p> <p>In "the medical policy, business administration", I pay attention to the point that is the human service organization where a hospital is typical and am based on psychology and behavioral science-like theories, and I am available, and a house staff thinks about the workplace which can work with worth doing.</p> <p>I increase examination about the medical policy to give incentive for those organization actions at the same time and study the medical care management from the bidirectional approach of the organization theory which is political science and the micro which are macro.</p> <p>In "the medical treatment information management studies", I perform medical quality improvement, management of the medical treatment information that decision making about the management cannot miss, a study about the utilization.</p> <p>I added it to a sickness and wound name and an operation in these days such as the participation in investigation to affect case registration such as the cancer registration, impact statement of DPC/PDPS, and the general grasp of each employment medical act, detailed accumulation of patient data were necessary, and, as for them, it was with grounds of important decision in a medical institution.</p> <p>In addition, the medical treatment results, the exhibition of the clinical index were effective for the medical institution choice of the patient, and the existence of the clerkdom which handled medical treatment information came to take a big role on strategic medical management.</p> <p>In this study, I put the principal objective in the medical treatment information management section and research medical treatment information management and the way of the employment to contribute to high quality medical offer and management.</p>

Master's: Medical Management and Information Science

Department	Course Aim
Medical Informatics	Students will study the interfaces, standardization, and security of medical information systems and pursue different aspects of system construction, including technology, engineering, and ethics. Students will also make research on the processing of system data using ontology and statistical approach. Furthermore, they will study how to train medical information specialists to work in hospitals and healthcare companies, as well as related teaching methods and curricula.
Healthcare Interpreting	Medical interpretation is a new professional role in the world, but the process of its development varies from country to country. With the increase number of foreign residents, foreign visitors, especially technical trainees in Japan, language barriers have come to be recognized as urgent issues in the medical field, and interest in medical interpretation is socially attracting attention. In this situation, from the viewpoint of a medical interpreter, we will consider how to respond to foreign patients who have limited Japanese language skills.



Doctoral Course:

Department	Course Aim
Radiological Sciences	<p>In this course, research guidance necessary for the development of researchers and educators with knowledge of state-of-the-art radiological science and technology is conducted. Using biological information obtained from medical images, we practice and provide guidance on state-of-the-art radiation research, with a focus on research topics related to diagnostic imaging based on morphological and functional information. We aim to develop researchers who can disseminate information to society by teaching you to present their research results at specialized academic conferences and to contribute them to academic journals.</p>
Clinical Laboratory Sciences	<p>Highly specialized knowledge can be acquired by conducting research activities on research themes. You will develop the ability to promote a series of research activities, such as setting research themes, drafting research plans, analyzing experiments, and writing dissertations. Detailed theme of this course should be referred to “Morphology and Cell Function, Biomedical and Analytical Science, Disease Control and prevention, Molecular Laboratory Medicine and Preventive medical Sciences in the master course of Clinical Laboratory Medicine”.</p>
Healthcare Regulatory Science	<p>With the aim of developing medicine (diagnostic agents, therapeutics), medical devices, and functional foods, students will cultivate the ability to promote a series of research activities in according with the research themes by instructors. Detailed theme of this course should be referred to “Laboratory Animal Science and Regulatory science in the master course of Clinical Laboratory Medicine” and “Medical imaging and information sciences in the master course of Medical Radiation Sciences”</p>



Doctoral Course:

Department	Course Aim
Medical and Health Care Professional Collaboration	In the special research, clarify your own theme for research regarding cooperation among professionals, regional alliances, international alliances, and regional comprehensive care, and prepare a research plan. Next, submitting the research plan to the Ethics Committee for approval. In addition to conducting research, preparing and publishing a reference article, creating and presenting a doctoral thesis. Detailed theme of this course should be referred to “Clinical Physiology and Functional Imaging in the master course of Clinical Laboratory Medicine”.
Rehabilitation Therapy Science	In this seminar, students will conduct research related to rehabilitation, the science of helping recover the activities. In research on physical therapist education, we will examine educational methods for training medical staff who can contribute to team medical care and have high teaching ability. This study also includes topics on the adequacy of clinical education and clinical training using Objective Structured Clinical Examination (OSCE) in physical therapists. This study also includes the topic of practical training in training instructors. Also, a new educational system that strengthens cooperation between university teachers and practical training instructors will be explained. Specifically, to standardize clinical skills, clinical skills will be practiced through simulated patients with stroke and osteoarticular systems. In research on motor systems, we will research motor control, motor learning, and rehabilitation engineering. Specifically, we will conduct basic research in simulated patients and clinical research in patients on postural control during movement, therapeutic learning, rehabilitation robots, etc. Through advice for the thesis, the students will have the skills to present their findings at academic conferences and academic journals in their specialized fields and disseminate information to society.

3. Admission Guide

Graduate School of Health Sciences
Center for International Relations



FUJITA HEALTH UNIVERSITY

藤田医科大学

Copyright (C) FUJITA ACADEMY ALL RIGHTS RESERVED

Admission Procedure

Admission Procedure Chart

Contact the department professor and discuss the contents of study and research topics.



Submit the application form by postal mail and pay admission fee.



Take an online examination.



Receive the examination result.



Proceed the Enrollment Procedure.



Fujita Health University Graduate School of Health Sciences

<Master's Course/ Doctoral Course>

Course Introduction

<Master's Course>

Application Requirements

Individuals who do not have Japanese citizenship and fulfil any of the criteria listed below by September 2021:

- 1) Individuals who have completed or expect to complete 16 years of education in Japan or foreign countries.
- 2) Individuals who demonstrate ability comparable to or higher than those in 1).

Requirements for Graduation

- 1) 2 years of study at school
- 2) One final thesis must be submitted

Fields and Departments

Clinical Laboratory Medicine

Morphology and Cell Function, Clinical Physiology and Functional Imaging, Basic Pathobiological Analysis, Disease Control and Prevention,
Molecular Cell Biology, Preventive Medical Sciences,
Science for Animal Models, Genetic Counseling,
Regulatory Science for Evaluation and Development of Pharmaceuticals and Devices, Regenerative medicine, cell and gene therapy, Assisted reproductive medicine

Nursing

Adult and Gerontological Nursing, Community Health Nursing, Mental Health Nursing, Pediatric Nursing, Maternal Nursing, Nursing Education, Nursing Management, Acute phase and Perioperative Period, Transplant Coordination

Medical Radiation Sciences

Neuroimaging and Brain Science, Medical Image Information Sciences, Radiation Safety Management, Medical Physics

Rehabilitation

Sensory-Motor System Sciences, Dysphasia Rehabilitation, Occupational Therapy Sciences, Rehabilitation Functional Morphology, Rehabilitation Educational Sciences

Clinical Engineering

Biomaterial structure function science, Medical Engineering
Fundamental and Therapeutic Aspects of Artificial Organs,

Medical Management and Information Science

Healthcare Management, Medical Informatics, Healthcare Interpreting

Fujita Health University Professor's/ Department Research Portal "PURE"

Please check the research details of the department you are applying for from the website below; <https://pure.fujita-hu.ac.jp/>



Fujita Health University Graduate School of Health Sciences

<Master's Course/ Doctoral Course>

Course Introduction

<Doctoral Course>

Application Requirements

Individuals who do not have Japanese citizenship and fulfil any of the criteria listed below by September 2021 :

- 1) The applicant must have a master's or professional degree in Japan or be a candidate for graduation with a master's or professional degree in Japan.
- 2) The applicant must have a master's or professional degree with earned credits from a foreign correspondence course or be a candidate for graduation with a master's or professional degree in the same manner.
- 3) The applicant must have a master's or professional degree from a foreign educational institution with a graduate degree specified by the Minister of Education, Culture, Sports, Science and Technology – Japan, and be a candidate for graduation with a master's or professional degree from the same institution.
- 4) Individuals who demonstrate ability comparable to or higher than those in 1) to 3)

Requirements for Graduation

- 1) 3 years of study at school
- 2) One final thesis and sub-thesis must be submitted

Fields and Departments

Medical Technology Sciences

Clinical Laboratory Sciences

Radiation Sciences

Radiological Sciences

Rehabilitation Sciences

Rehabilitation Therapy Sciences

Medical and Health Care Sciences

Medical and Health Care Collaboration

Health Care Regulatory Sciences

Note (Common Issues):

- Please choose a department which matches to your research interest, you can research the details on the research portal “PURE” in below.
- Prior to application, be sure that applicants contact professors at the desired departments/laboratories.
- Some fields may require Japanese medical professions license .

Fujita Health University Professor's/ Department Research Portal “PURE”

Please check the research details of the department you are applying for from the website below; <https://pure.fujita-hu.ac.jp/>



Fujita Health University Graduate School of Medicine

<Master's course/ Doctoral Course>

Admission Overview 2021

Application Procedure

- 1) Please check the Admission Guidance Brochure*1 on website.
- 2) Choose the professor/ department which you are interested in and contact them directly to confirm if your interest and professor's/department's research matches.
- 3) After getting the permission from the professor, apply for the admission and send the printed application documents to the office.
- 4) Go through the admission Fee payment procedure.

*1 <https://www.fujita-hu.ac.jp/en/faculty/index.html>

Admission Schedule

< Spring Admission >

	Master's / Doctoral
	Primary Recruitment Additional Recruitment
Application Period	Not available for 2021
Examination Date	
Announcement of Examination Results	

< Autumn Admission >

	Master's/Doctoral
Application Period	January 25 th - February 8 th
Examination Date	February 15 th
Announcement of Examination Results	February 19 th - 22 th

Admission Fee

	Master's	Doctoral
Enrollment Fee	150,000 Yen	150,000 Yen
Annual Tuition Fee	750,000 (550,000*) Yen	750,000 (300,000*) Yen
Total	900,000 (700,000*) Yen	900,000 (450,000*) Yen

* After passing the exam, applicants may apply for the tuition exemption.

Examination Method

- 1) An interview and an oral examination online
At the examination, candidates first give a presentation about their research plan. Examiners ask about the content of the presentation.

Subsidy & Grant

You need to have a certain financial plan for your stay in Japan. Please search and apply for the subsidy or grants if needed.

- 1) Scholarship from Ministry of Education, Culture, Sport, Science, Technology-Japan: Please contact Japanese Embassy in your country
- 2) Fujita Academy Grant: <https://www.fujita-hu.ac.jp/~intl/forfhumembers/jyoseikin/index.html>

Accommodation Information

FHU provides on-campus dormitory for international students. Applicants can reserve the dorm after passing the examination.

Price: 40,000yen/month for regular single room

For further details: <https://www.fujita-hu.ac.jp/~intl/international/campuslife/dormitory/index.html>

* For Fujita Academy Grant and dormitory information, please contact FHU Center for International Relations e-mail: c-int-rl@fujita-hu.ac.jp

<CONTACT>

Administrative Office of Graduate School of Health Sciences

e-mail: hs-jimk2@fujita-hu.ac.jp



4. Living in Japan

Graduate School of Health Sciences
Center for International Relations



FUJITA HEALTH UNIVERSITY

藤田医科大学

Copyright (C) FUJITA ACADEMY ALL RIGHTS RESERVED

Cost of Study and living in Japan

Applicants should have a financial plan considering required costs of study, commodity prices, currency difference, and so on before the study abroad.

Cost Simulation of study and living in Japan

The cost in the chart is minimum estimated amount.

(JPY)

	1st yr	2nd yr	3rd yr	(Master's)	(Doctoral)
Cost of Studying					
Admission Fee*2	150,000			150,000	150,000
Tuition*12	750,000	750,000	750,000	1,500,000	2,250,000
Other			20,000		20,000
Living cost					
Housing*2	480,000	480,000	480,000	960,000	1,440,000
Food	720,000	720,000	720,000	1,440,000	2,160,000
Other	120,000	120,000	120,000	240,000	360,000
				Total	
				4,290,000	6,380,000
				FHU Grant Receiver	
				1,680,000	2,520,000

*1 After passing the exam, applicants may apply for the tuition exemption (tuition will be Master's: 500,000JPY / Doctoral: 300,000JPY per year)

*2 FHU grant receivers will be fully exempted from the payment of the admission fee, tuition and the dormitory.

The cost above is estimated by Center for International Relations and the textbook fee and other



Accommodation

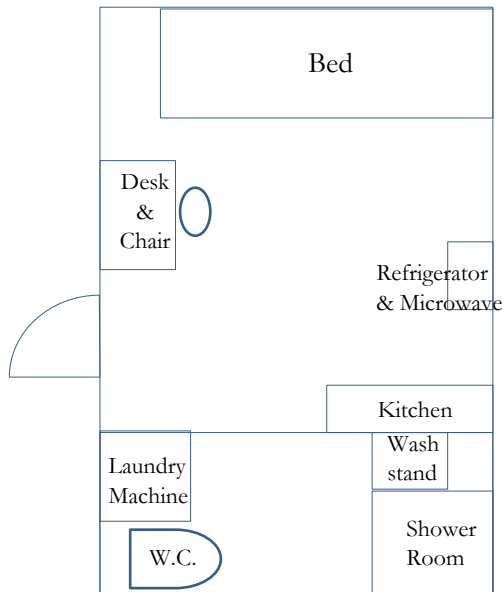
Fujita Health University provides the dormitory for International Students.
The dormitory is located on campus in low cost which supports your campus life.

DORMITORY FUJITA

Price : Single room **JPY 40,000 per month**

*Regardless of the number of your stay, Initial Cleaning Fee (JPY 10,000) is charged at the beginning

*Gas, Electoricity, Wifi and water expences are included to the rent.



Room Layout (Single Room)



Link: <https://www.fujita-hu.ac.jp/~intl/international/campuslife/dormitory/index.html>

Financial Support in Japan

The government/ private scholarships for Non-Japanese speakers are relatively limited in Japan. Please consider your financing plan and consult with your director in FHU before the application. It is also preferable to search for the scholarships in home country before you depart to Japan.



Financial Support in Japan

1. MEXT Scholarship

Prospective Applicants : Graduate School Students

Application Period : Depends on the embassy (usually from July -August)

Amount of scholarship : Full tuition

Monthly allowance (JPY 117,000~145,000円 per month)

Return trip flight between Japan and home country

All application procedures for Japanese Government (Monbukagakusho: MEXT)

Scholarships are conducted through Japanese embassies, consulates in your countries.

If you require any further information regarding Japanese Government (MEXT)

Scholarships, contact Japanese embassies, consulates in your countries, or Fujita Health University.

*Website for MEXT Scholarship

https://www.mext.go.jp/a_menu/koutou/ryugaku/boshu/1415352_00001.htm

Application guideline and form for 2021

<https://www.studyinjapan.go.jp/en/smapi-stopj-applications-research.html>



Financial Support in Japan

2. Fujita Academy Grant

Prospective Applicants : Graduate School Students

Application Period : From October 1st to 31st before a year of admission

Amount of scholarship : Admission Fee

Annual Tuition

Free accommodation (Dormitory Fujita)

Fujita Academy offers its own academic support "Fujita Academy Grant" for prospective international students who are experiencing financial hardship that makes it difficult to start/continue their studies despite tremendous motivation to study at Fujita Health University (FHU). Recipients do not need to repay this grant.

*Website of FHU Center for International Relations

<https://www.fujita-hu.ac.jp/~intl/forfhumembers/jyoseikin/index.html>



Contact

➤ **Admission for Graduate School of Health Sciences**

Administration Office
Graduate School of Health Sciences
hs-jimk2@fujita-hu.ac.jp

➤ **About FHU Grant, Facilities in FHU, support to obtain VISA, living in Japan etc...**

Center for International Relations
c-int-rl@fujita-hu.ac.jp

